

Expanding the line of CounterView® products, the new CVe Monitor tracks mould activity, allowing users to view the data on the display or from comprehensive reports.



**Features:**

- 7-digit LCD display with a push button to move through the display modes.
- Mini USB connectivity for data retrieval, with cables sold separately.
- Battery lasts 5+ years.
- 2GB Flash drive for file storage
- Dimensional compatibility with Progressive's mechanical CounterViews.

**Technical Specifications:**

- Water resistant, rated NEMA enclosure 1 and IEC enclosure class IP10.
- Max temperature: 190° F (90°C). Can be installed in rails away from parting line using a core pin for activation.
- Provided at -25 cycles to allow for set up.

**Cycle Count**

Total cycles for the life of the mould is presented on the main screen of the CVe Monitor.



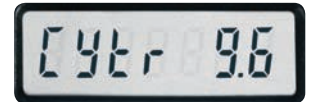
**Cycle Time**

Since the first production cycle, the cycle time is shown in seconds for the life of the mould.



**Cycle Time-Recent**

Cycle time for the past 25,000 cycles.



**Activity Percentage**

The percentage of time that the mould has been active versus idle or in sleep mode.



**Activity Percentage-Recent**

The percentage of time the mould has been active in the past 25,000 cycles.



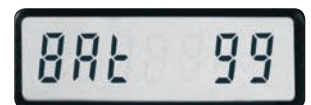
**Cycle Count Reset**

A separate counter that can be reset to 0 for interim monitoring of cycles.



**Battery Life**

Shows the percentage of battery life remaining. At 5%, the display will alert the moulder to replace the unit.



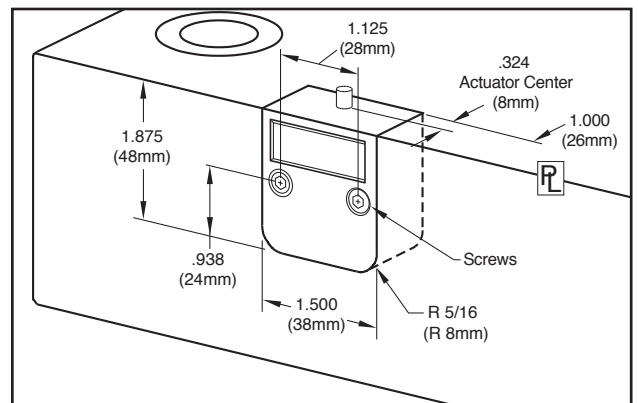
**Embedded Flash Drive**

The flash drive on the CVe Monitor allows for convenient storage and retrieval of tool-specific files such as prints, BOM lists, set up instructions, etc...



OEM-Specific CVe Monitors are available with additional features and reporting capabilities. Contact AST Technology for more information.

To order the OEM-specific units, the CVe part number is created (ex. CVE-PLM-ABC1-32587-8873), utilizing the following parameters:



CVE	-	PL	-	M	-	ABC1	-	32587	-	8873
		<b>Mounting Style</b>		<b>Mount Series</b>		<b>OEM ID</b>		<b>Part ID</b>		<b>Mould ID</b>
		<b>PL</b> (Parting Line Mount)		<b>I</b> (Inch) <b>M</b> (Metric)		The Identification of the OEM's Tooling Management Department assigned by AST.		The specific part designation determined by your company for this project.		The mould number or job number that will be utilizing the CVe Monitor.

Drive comprehensive reporting using data from the CVe Monitor when running the OnDemand software, available at no charge from CVeMonitor.com.



OnDemand software enables the user to generate Adobe Acrobat (PDF) and Excel reports to share with customers and other colleagues with these metrics:

**A:** When the CVe is initialized, the target cycle times and activity percentages can be entered. Reports compare actual values to targets, providing a quick view of any variances.

**B:** Statistics are provided to show quantity of total cycles and inactivity for the life of the tool.

**C:** Weekly sessions are presented graphically to show production activity levels.

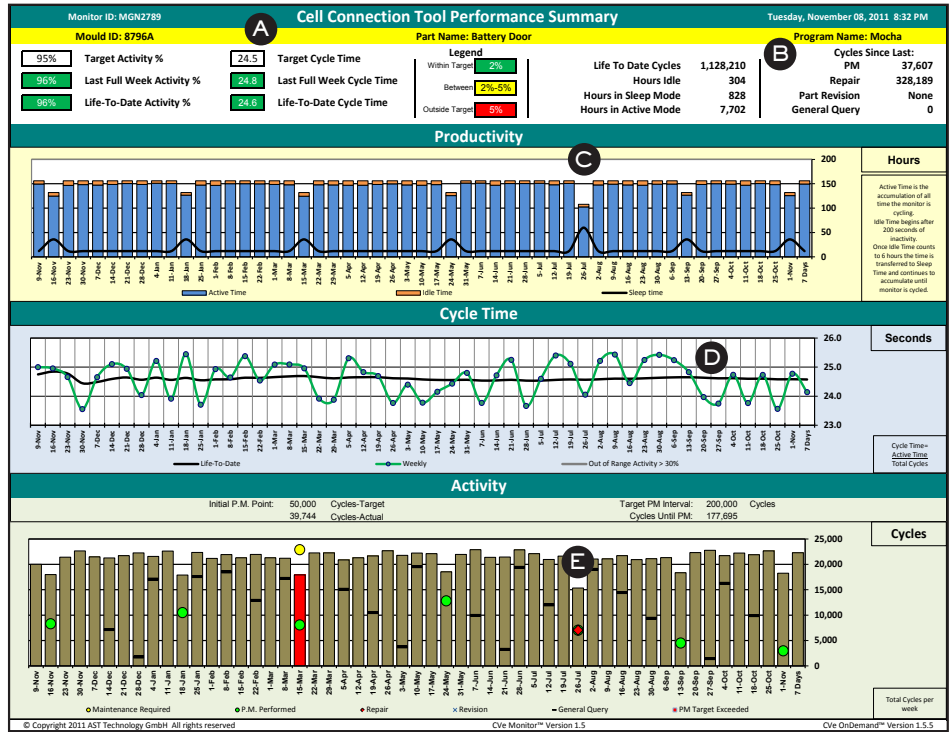
**D:** Weekly cycle time tracking identifies tools with variances over the past year.

**E:** The activity portion of the report takes the target preventive maintenance (PM) points set by the moulder and compares them to actual maintenance pulls.

**F:** An activity log is generated to show details of each CVe synchronization, from battery life to the user generating the report.

**G:** While running OnDemand, the user can route a copy of the report to colleagues for review.

**H:** Each time a sync is performed, a reason code is entered, and details surrounding the condition of the mould during that pull can be entered as notes.



OnDemand Activity Log [Software version 1.5.5]											
CVe Initialize Date						CVe Connection Reason					
Date/Time	BAT	Cycles	OD User	Com. By	Company	REV	MNT	REP	GEN	HLV	Notes
08-Nov-11 21:05	95	1,128,210	MOLDMAS1	Carol Sperow	Cellular Conn.	N	N	N	Y	N/A	
27-Oct-11 6:51	95	1,090,603	FASTTOOL	Theo Hoyer	Cellular Conn.	N	Y	N	N	N/A	Cleaning and Inspection Completed
15-Oct-11 20:57	95	1,052,996	MOLDMAS1	Carol Sperow	Cellular Conn.	N	N	N	Y	N/A	
21-Sep-11 20:55	95	977,782	MOLDMAS1	Carol Sperow	Cellular Conn.	N	N	N	Y	N/A	
08-Sep-11 6:50	95	940,175	FASTTOOL	Theo Hoyer	Cellular Conn.	N	Y	N	N	N/A	Cleaning and Inspection Completed
27-Aug-11 21:05	96	902,568	MOLDMAS1	Carol Sperow	Cellular Conn.	N	N	N	Y	N/A	
01-Aug-11 20:45	96	827,354	MOLDMAS1	Carol Sperow	Cellular Conn.	N	N	N	Y	N/A	
23-Jul-11 7:12	96	800,021	FASTTOOL	Theo Hoyer	Cellular Conn.	N	Y	Y	N	N/A	Cleaning, inspection and repair completed: cracked material saver replaced. Pics and work order on flashdr.
23-Jul-11 21:00	96	762,414	MOLDMAS1	Carol Sperow	Cellular Conn.	N	N	N	Y	N/A	
27-Jun-11 21:10	96	687,200	MOLDMAS1	Renee Sanchez	Cellular Conn.	N	N	N	Y	N/A	
03-Jun-11 6:50	97	611,986	FASTTOOL	Theo Hoyer	Cellular Conn.	N	Y	N	N	N/A	Cleaning and Inspection Completed:
22-May-11 21:05	97	574,379	MOLDMAS1	Carol Sperow	Cellular Conn.	N	N	N	Y	N/A	
27-Apr-11 20:58	97	496,165	MOLDMAS1	Carol Sperow	Cellular Conn.	N	N	N	Y	N/A	
03-Apr-11 20:57	97	423,951	MOLDMAS1	Carol Sperow	Cellular Conn.	N	N	N	Y	N/A	
13-Mar-11 6:51	98	410,000	FASTTOOL	Theo Hoyer	Cellular Conn.	N	Y	N	N	N/A	Cleaning and Inspection Completed
07-Mar-11 21:00	98	380,000	MOLDMAS1	Carol Sperow	Cellular Conn.	N	N	N	Y	N/A	
07-Feb-11 21:01	98	294,786	MOLDMAS1	Carol Sperow	Cellular Conn.	N	N	N	Y	N/A	
15-Jan-11 6:50	98	225,326	FASTTOOL	Theo Hoyer	Cellular Conn.	N	Y	N	N	N/A	Cleaning and Inspection Completed
03-Jan-11 20:52	98	187,719	MOLDMAS1	Renee Sanchez	Cellular Conn.	N	N	N	Y	N/A	
09-Dec-10 21:01	99	112,505	MOLDMAS1	Carol Sperow	Cellular Conn.	N	N	N	Y	N/A	
11-Nov-10 6:50	99	30,056	FASTTOOL	Theo Hoyer	Cellular Conn.	N	Y	N	N	N/A	Initial maintenance check performed. Pictures and measurements on flashdr.
24-Oct-10 17:45	99	0	FASTTOOL	Theo Hoyer	Cellular Conn.	N	N	N	Y	N/A	Ready to ship. Geometry on flashdr