

CVe OnDemand™





User Information

Version 1.5.1



OnDemand is a reporting software which is provided free of charge by AST Technology. When connected to a CVE Monitor, OnDemand generates a historical service record for your mould.

System and Software Requirements

Required

-  Windows XP (SP2 or greater) or Windows 7 Professional
-  .Net Framework 4 Client Profile*
-  Microsoft Excel 2003 or greater
-  Internet Explorer 8

Recommended

-  Microsoft Excel 2007 (SP2) or Excel 2010 Professional
-  Internet Access

*.Net Framework 4 Client Profile will automatically download when OnDemand is installed, and your computer must have an Internet connection. If you are not connected to the internet and .Net Framework 4 Client Profile is not installed on your computer it can be downloaded from <http://www.microsoft.com/download/en/details.aspx?id=24872> and installed manually.

Installing OnDemand Software

OnDemand software can be downloaded from <http://www.ast-tech.de/CVe-ondemand/>

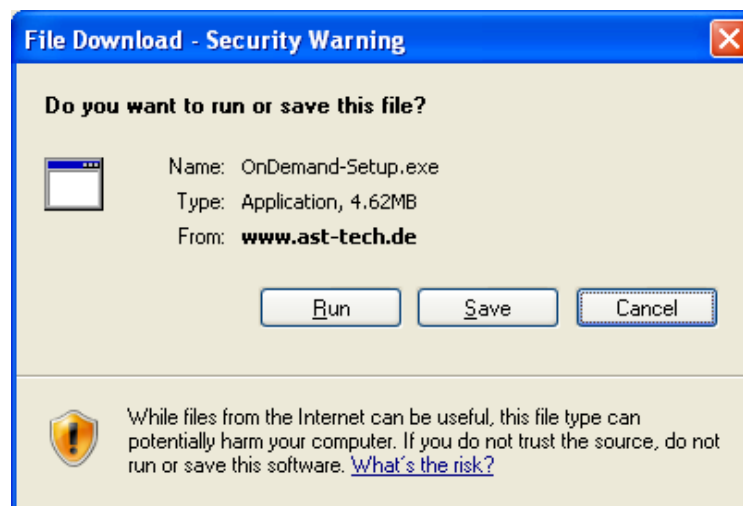
STEP 1

Clicking
"OnDemand
Software"
starts the
installation
procedure



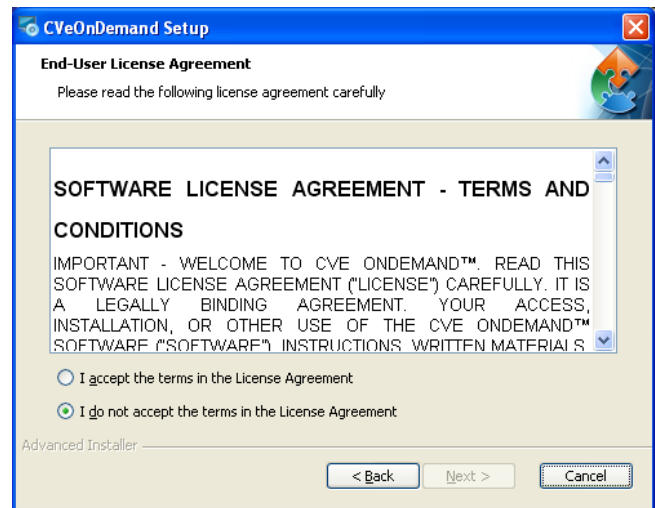
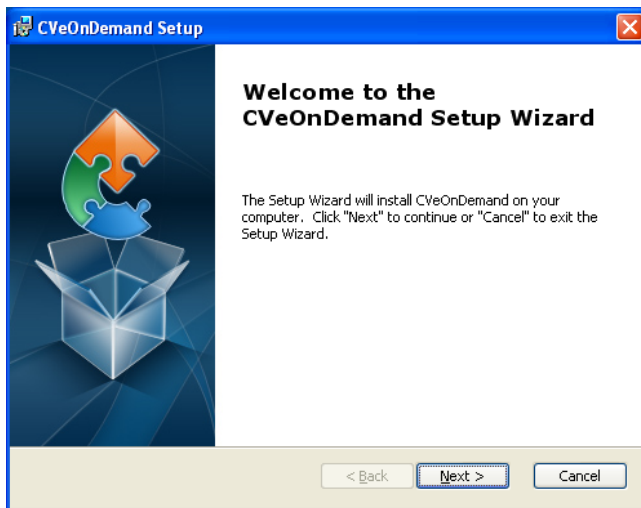
STEP 2

Choose "Run"
to continue the
installation



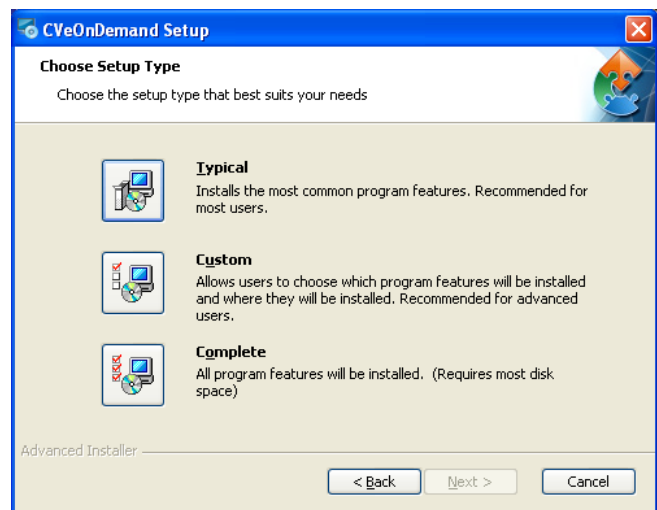
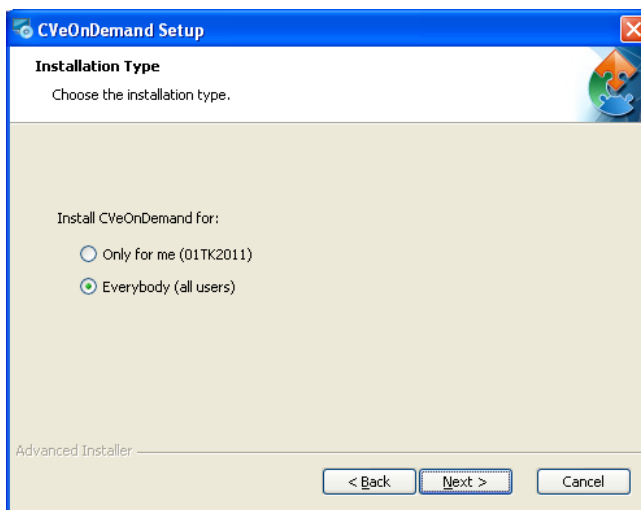
STEP 3

Follow the prompts on the screen by clicking **“Next”**.
When prompted accept the Terms and Conditions then select the **“Next”**.



STEP 4

Choose Installation Type (selecting **“Everybody”** is the recommended setting) and select **“Next”**. Finally click on **“Complete”** install and click **“Next”** to finish the installation.



Setting Up Excel

OnDemand software relies on Microsoft Excel to generate the graphs and logs. The following steps grant OnDemand access to the Microsoft Excel.

STEP 5

You must complete **ONE** step as outlined below based upon the version of Microsoft Excel in use.

EXCEL 2010

- Open Excel 2010
- Select **File** from the taskbar then select **Options** on the left hand side
- Select **Trust Center** from the left side then click on the **Trust Center Settings** box
- Choose **Macro Settings** from the left and check the box Trust access to VBA project
- Click **OK** and exit Excel

EXCEL 2007

- Open Excel 2007
- Click on the **Microsoft Office button** located in the upper left hand corner
- Select **Excel Options**
- Click on the **Trust Center** tab then click on the **Trust Center Settings...**
- Choose **Macro Settings** then check the box to **Trust access to the VBA project object model**
- Click **OK** and exit Excel

EXCEL 2003

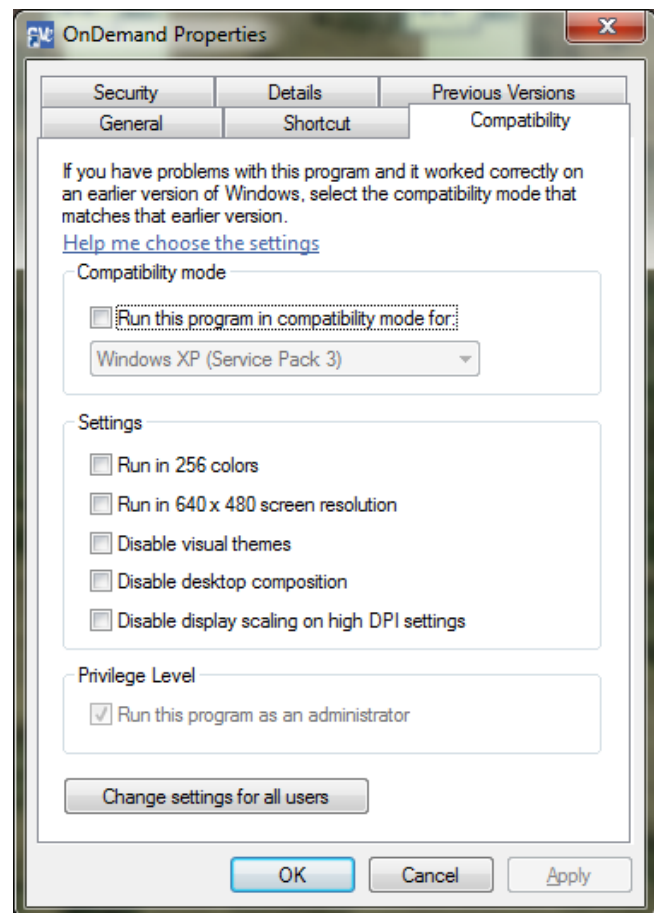
- Open Excel 2003
- From the drop down menu click on **Tools**, then **Macro**, then select **Security...**
- Select the **Trusted Publishers** tab then check the box labeled **Trust access to Visual Basic Project**
- Click **OK** to apply the settings and exit from Excel

Windows 7 Set Up

If using Windows 7, OnDemand software requires administrative privileges to properly run the full program. Follow these steps to grant OnDemand administrative privileges.

STEP 6: Windows 7 Only

- Right click the OnDemand desktop icon
- Choose **Properties** from the menu (bottom of list)
- Check the box next to **Run this program as an administrator**
- You may be prompted to enter an administrative password. (If prompted, consult your MIS or IT department for assistance.)
- Click Apply, and then close the window



Once the installation is complete, OnDemand can be run from any shortcut designated during the installation process:

- Start Menu (Cve=folder name)
- Cve OnDemand™ icon on desktop
- Quick Launch menu

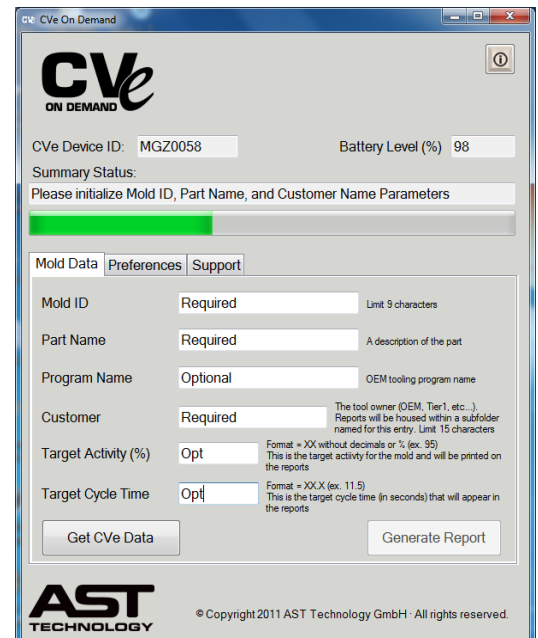
Initializing a CVe Monitor

Connect the USB cable to the CVe Monitor and launch OnDemand software (if not already opened.) If this is the first time running the software and connecting, the drivers will load onto the computer—and may take a few extra seconds.

Once in the main window shown at right, ensure that the CVe Monitor is not in Flash Storage Mode by pressing the button on the face of the Monitor until the display **doesn't** display **FLASHdr** then hit the “Get CVe Data” button at the bottom, and it will link up to the device, showing the unique Device ID in the area at the top.

Each CVe Monitor is unique to the specific mould, and requires registration to that mould. The first time that a new CVe is brought up in the software, the user will be prompted to enter the specific mould Information. This data consists of (3) required entries and (3) optional entries as shown at right and explained below:

- ✚ **Mould ID:** Mould Identifier as assigned by the owner of the Mould. It can be an alphanumeric entry and is limited to a length of (9) characters.
- ✚ **Part Name:** Part identifier assigned by the Mould Owner.
- ✚ **Program Name [OPTIONAL]:** Tooling Program name as identified by the Mould Owner.
- ✚ **Customer:** Name of purchaser of moulded products, typically the OEM or Tier 1 company.
- ✚ **Target Activity (%) [OPTIONAL]:** Percentage of active time to idle time. (exp. If Active Time = 9 hours and Idle Time = 1 hour then Activity % = (9 + 1)/9 or 90%)
- ✚ **Target Cycle Time [OPTIONAL]:** Target time to complete a moulding cycle



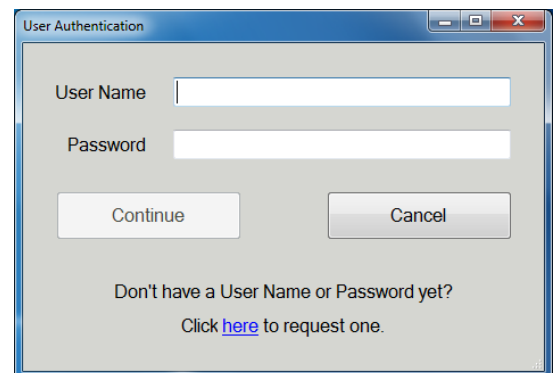
Note: Above data is permanently written to the CVe. If unsure about the data being entered, leave it as presented and return to it at a later date. In addition, these fields are used to populate the Mould Performance Summary Report discussed later in this guide.

Registering OnDemand Software

When OnDemand is run on a computer for the first time, the user will be prompted to enter a User Name and Password. Clicking the word “here” at the bottom of the User Authentication Screen will provide details for obtaining a User Name and Password.

Once the name/password has been received by AST via email, launch OnDemand and enter the User Name and Password that has been provided. The User Name / Password combination provided to your company will be used for all OnDemand installations within the site.

After entering a User Name and Password for the first time, subsequent launching of the software will not require information entry.



Choosing Data Storage Location Preferences

OnDemand supports both local and network file storage.

- Local Storage would be a single computer that saves information to a drive contained on the same computer (typically C:/)
- Network Storage pertains to situations where several computers are linked together and are able to share files/information from a shared folder or directory.

In most situations Network Storage is preferred over Local Storage. The advantages include:

- Ability to run a Mould query from any computer running OnDemand
- Central repository of all Mould reports makes report reviewing easy.
- Network Storage drives are backed up more frequently, decreasing data loss risk.

The first time that OnDemand is run you will be taken to the Preferences tab. From here you will choose a directory to save your OnDemand Reports.



Initially, OnDemand will default to a storage location on a Local Drive. If you choose to accept the this default click the Confirm button. If you decide to select a different location click on the Browse button, select the new destination location, then click the Confirm button.

Activity Reports

OnDemand creates a customized Activity Report for each mould with a CVE. These reports compare historical and current measures of Efficiency and Productivity in addition to providing a log of Mould revisions, maintenance, and breakdowns.

Activity Reports are powerful indicators of the condition of the mould and lend valuable insight into moulding quality issues. As such, many key stakeholders require that reports are sent at regular intervals.

Generating a Performance Report and Activity Log

Connect the CVE and select “Get CVE Data” if not already done, per the Initialization section of this guide.

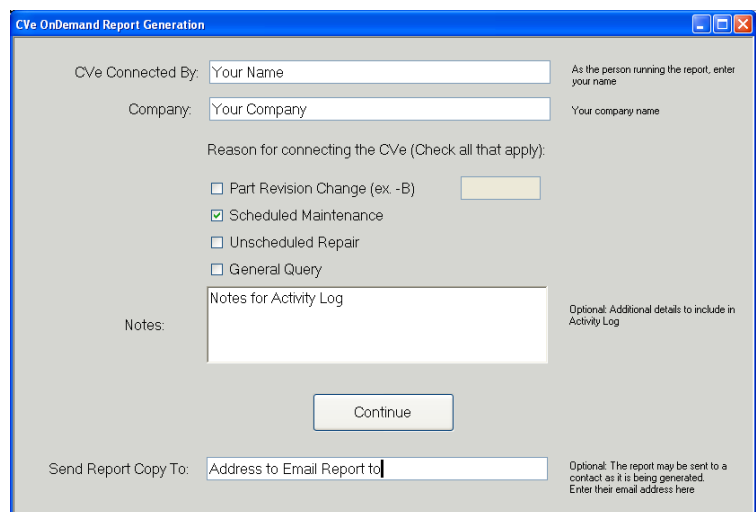
Once OnDemand has completed its query of the CVE Monitor, you will see a notification in the Summary Status bar informing you to click the Generate Report button.

Clicking on this button will open the Report Generation window.

Report Generation Window

A Mould Performance Summary Report (MPSR) is generated by completing the required fields on the Report Generation Window. This information provides valuable data to help track the effectiveness of preventive maintenance programs while the notes field provides a virtual notebook later shown in the Activity Log.

To generate a report complete the **CVE Connected By** and **Company** fields. You may optionally enter an email address in the **Send Report Copy To** field, allowing a copy of the Performance Report and Activity Log to be emailed through the software, eliminating an additional step to meet your reporting requirements.



The screenshot shows a window titled "CVE OnDemand Report Generation". It contains the following fields and options:

- CVE Connected By:** A text box containing "Your Name".
- Company:** A text box containing "Your Company".
- Reason for connecting the CVE (Check all that apply):**
 - Part Revision Change (ex. -B)
 - Scheduled Maintenance
 - Unscheduled Repair
 - General Query
- Notes:** A text area labeled "Notes for Activity Log".
- Send Report Copy To:** A text box labeled "Address to Email Report to".
- Buttons:** A "Continue" button.

The ability to send emails from OnDemand requires an Internet connection and may require additional firewall settings. Your company must also allow OnDemand to have access to the Internet to be notified of upgrades by verification of the version as the software runs. If users cannot allow access for this, emails need to be sent via Outlook or other email systems by attaching the reports generated that are saved to the folder(s) designated.

Report Formats

Recognizing the differences in software in use by our customers, OnDemand is configured to operate across multiple platforms and Windows/IT environments. Full reporting functionality can be gained by using Excel 2003 or greater. File formats are impacted by the version of Excel installed on the PC being used to query the CVE Monitor.

Reporting Formats Supported

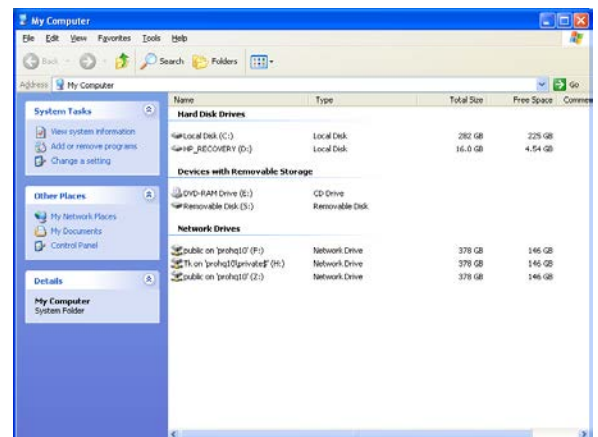
Microsoft Excel Version	Creates PDF Document*	Creates Excel Workbook
Excel 2010	✓	✓
Excel 2007	✓	✓
Excel 2003		✓

AST Technologies recommends Excel 2007 or greater. The ability to generate an uneditable PDF creates an added measure of report security. Please note that the Excel report is also password protected, but the PDF is the more portable format, not dependent upon the recipient's version of Excel.

Flash Storage Mode

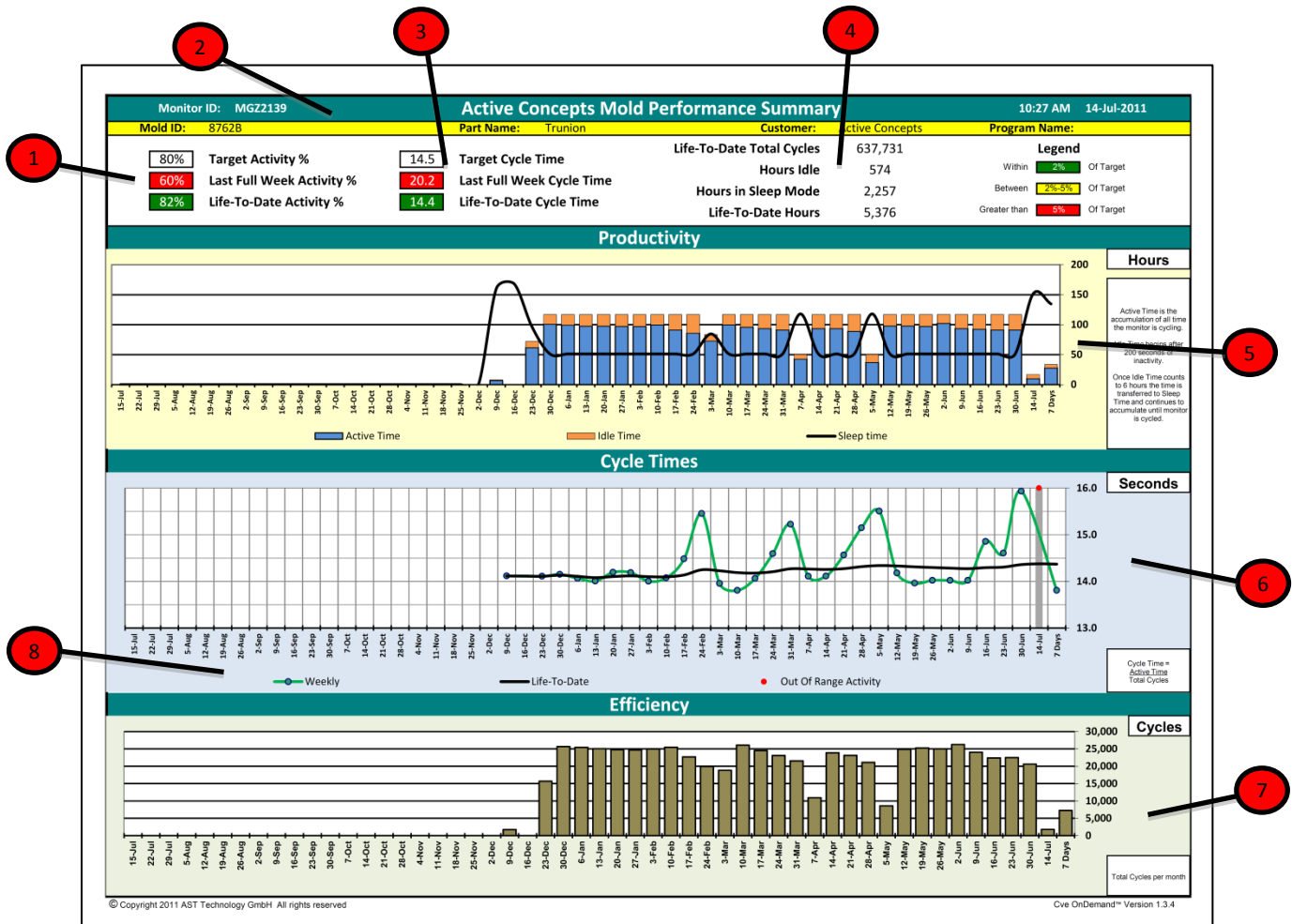
All CVE Monitors version 1.5 and greater come with approximately 2GB of file storage space. The Flash drive uses preinstalled drivers and does not require additional software. To access the flash drive, tether the CVE to your PC using a mini-USB to USB cable then press the button on the face of the CVE until **FLASHdr** is displayed on the digital read-out.

Windows will automatically assign a drive letter to the CVE Monitor. To determine what drive has been assigned to the CVE click on Windows Explorer and find the device titled **"Removable Disk"** and the drive listed along side it is the assigned drive.



This feature has been added to allow portability of documents relating to the mould. For example, CVE Flash allows updated mould geometry (blueprints) to "travel" with the tool. This allows mould shops to have the information necessary to complete repairs and revisions without the wastefulness of having to track down prints.

OnDemand Mould Performance Summary Report



- Activity Monitors** indicate changes in idle times, alerting personal of downtime issues
- Mould Data Panel** allows all stakeholders to quickly identify the mould being viewed
- Cycle Time Monitors** quickly call attention to increases and decreases in Cycle Times
- Service History** displays hours that your mould has been run and Lifetime Cycle Counts
- Productivity Graph** shows the amount of downtime for your mould
- Cycle Time Graph** alerts individuals to changes in cycle time by comparing weekly data to user defined targets
- Efficiency Graph** presents historical weekly cycle counts to allow accurate press time assessments

OnDemand Activity Log

OnDemand Activity Log [Software version 1.3.4]												
Date	15-Apr-11											
Time	5:38											
Device ID	OGZ0011											
Mold #	8565B											
Part Name	Wheel											
Program Name	Mobility											
Customer	The Dr Co											
Activity %	80											
Cycle Time	20											
Date/Time	Battery	Cycles	OD User	Conn. By	Company	Dest.	Reason For Connecting CVE Monitor				Notes	
							REV	MAI NT	REP	GEN		REV#
Friday, July 1, 2011 5:41:08 PM	98	191406	Falcon01	Richard Reeves	Falcon Mold	Tom.Lewis@Imperial.com	N	N	Y	N	N/A	Parts are out of tolerance. OEM requested shut-down for troubleshooting
Friday, June 24, 2011 5:41:08 PM	98	161528	Falcon01	Richard Reeves	Falcon Mold	Tom.Lewis@Imperial.com	N	N	N	Y	N/A	
Friday, June 17, 2011 5:57:38 PM	98	129710	Falcon01	Richard Reeves	Falcon Mold	Tom.Lewis@Imperial.com	N	N	N	Y	N/A	
Friday, June 10, 2011 5:46:29 PM	98	100088	Falcon01	Richard Reeves	Falcon Mold	Tom.Lewis@Imperial.com	N	N	N	Y	N/A	
Friday, June 3, 2011 5:43:18 PM	99	76628	Falcon01	Richard Reeves	Falcon Mold	Tom.Lewis@Imperial.com	N	N	N	Y	N/A	
Friday, May 27, 2011 5:42:59 PM	99	51768	Falcon01	Richard Reeves	Falcon Mold	Tom.Lewis@Imperial.com	N	N	N	Y	N/A	
Friday, May 20, 2011 5:47:32 PM	99	27724	Falcon01	Richard Reeves	Falcon Mold	Tom.Lewis@Imperial.com	N	N	N	Y	N/A	Second sampling. Approved for production and shipment to molder
Friday, April 29, 2011 5:39:59 PM	99	4096	Falcon01	Richard Reeves	Falcon Mold	Tom.Lewis@Imperial.com	N	N	N	Y	N/A	
Friday, April 15, 2011 5:38:10 PM	99	686	Falcon01	Richard Reeves	Falcon Mold	Tom.Lewis@Imperial.com	N	N	N	Y	N/A	Mold check-in. Critical bore dimensions are undersize. Returning to mold shop for corrections

- Mould Identification Data** provides important information such as
 - Date Mould was entered into service
 - Unique Serial Number for the CVE Monitor linked to this log
 - Name of part being moulded
 - Unique Program Name to allow OEMs to link together data from program tools
 - Customer's name
 - Target Activity Percentage for integration into Activity Reports
 - Target Cycle Time to indicate failure to maintain recommended cycle times
- Mould Activity Dates** indicate reasons for mould pulls and demonstrate adherence to OEM directed reporting
- Lifetime Cycle Count** provides historical usage requirements allowing more efficient planning of Preventive Maintenance Programs
- Destination Address** provides a log of customers that have been provided an Activity Report and Log, eliminating the need to go through additional steps to provide this information to your customer.
- Maintenance Log** records downtime related to Preventive Maintenance, and Mould Revisions
- Virtual Notebook** allows customers the ability to keep a log of electronic record with each of their moulds.

For technical support on the software or any questions on the CVE Monitor, please contact helpdesk@ast-tech.de or your local distributor.